



PROJECT
MONARCH
HEALTH

Monarchs and their allies

Figures not drawn to scale
Coloration may vary geographically



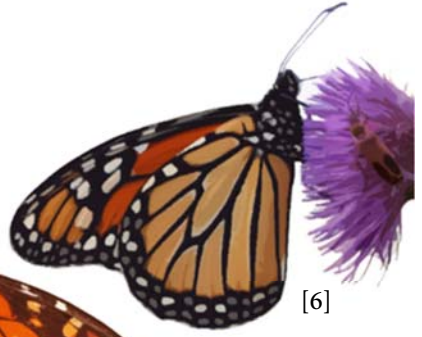
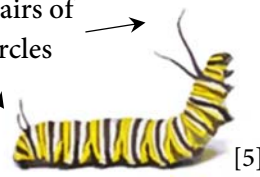
[1-4]

Monarch butterfly

Danaus plexippus

Color variants of queen pupae (green, white/yellow, pink)

Two pairs of
tubercles



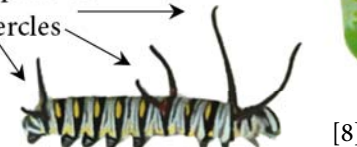
Black veins
on dorsal
surface

[7]

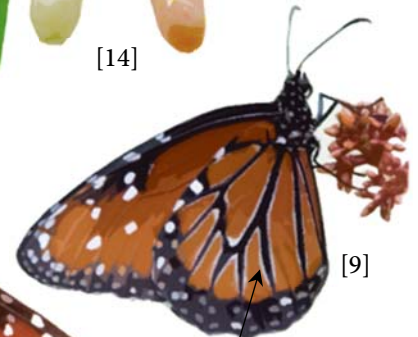


[14]

Three pairs of
tubercles



[8]



[9]



White spots reaching
forewing margin

[10]

No black veins
on dorsal
surface

White
outline
around veins

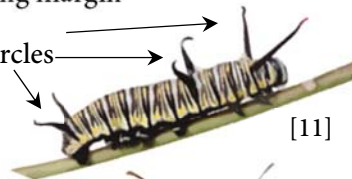


[1-3]

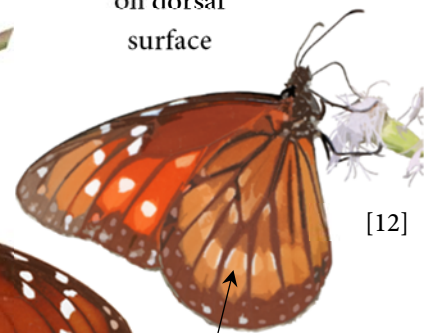
Queen butterfly

Danaus gilippus

Three pairs of tubercles



[11]



[12]



White spots not reaching
forewing margin

[13]

No black veins
on dorsal

Crescent shaped
marking



[1-3]

Soldier butterfly

Danaus eresimus